

# THE HAMPTONS

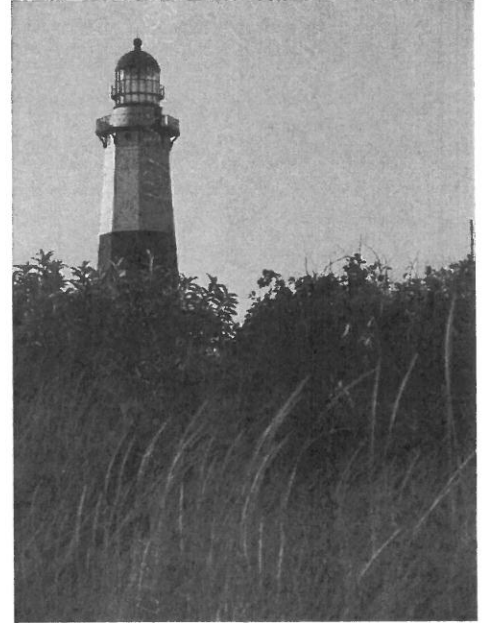
**2 Days**

*Immortalized in F. Scott Fitzgerald's "The Great Gatsby", the Hamptons have long been the summer getaway for the rich and famous. Charming waterfront villages, world class wineries and beautiful beaches are just a few of the many highlights of this magical place. On this memorable 2 day fall getaway, you'll discover this world class resort area when the huge crowds are gone and the prices are a lot less expensive.*

## NASHUA SENIOR CENTER September 18-19, 2016

**TOUR INCLUDES:**

- **Overnight Accommodations at the Hyatt Place East End in Riverhead, NY**
- **2 Meals: 1 Continental Breakfast and 1 Dinner**
- **Scenic ferry crossings to Orient Point and from Port Jefferson**
- **Wine tasting at a Local Winery**
- **Guided "Rich and Famous Tour" of the Hamptons**
- **Services of a Professional Conway Tour Manager**



**Day 1:** This morning we take the Cross Sound ferry from New London, CT to Orient Point, the gateway to Long Island's famed North Fork area. We stop first in the cozy waterfront village of Greenport. Later enjoy a visit to a local winery. Enjoy a memorable tasting of some of the area's most exclusive wines. Our accommodation for the evening is Hyatt Place East End in Riverhead. This unique waterfront hotel is ideally located in the center of this charming town often referred to as the gateway to the Hamptons. This evening enjoy a fabulous dinner at your hotel. (D)

**Day 2:** This morning a local guide will lead a most interesting tour of the Hamptons. Explore the famed villages of South and East Hampton, home to such celebrities as Billy Joel, Matt Lauer, Ina Garten (Barefoot Contessa), Steven Spielberg and Martha Stewart. Visit charming Sag Harbor to view its historic waterfront area amid Greek Revival mansions and Victorian cottages. Later we backtrack toward the lovely seaport town of Port Jefferson before taking the scenic ferry to Bridgeport, CT and continue our journey home. (CB)

- **Double Occupancy \$309 pp**
- **Triple Occupancy \$299 pp**
- **Single Occupancy \$379 pp**
- **Child Rate\* \$259 pp**

\*Child Rate applies based on 2 adults in the room.



**\$50.00PP DEPOSIT IS DUE 6/11/2016. FINAL DUE 7/28/2016.**

See reverse side for Cancellation Policy, Waiver and Activity Level information.

For more information & reservations contact:

**MARGO BELL at (603) 816-2643**

**Activity Level**

Easy	1	2	3	Active
------	---	---	---	--------

Tear & Send to: **Margo Bell, Nashua Sr. Center, 70 Temple Street, Nashua, NH 03060**

**918HAM**

**Nashua Seniors**

Name: \_\_\_\_\_  M  F  
First Middle Name Last

Address: \_\_\_\_\_  
Street Apt. City State Zip

Phone: \_\_\_\_\_ Email: \_\_\_\_\_  
Day Evening