



Dining Room/Dance Floor

DINING ROOM

- 33.5' x 38.5' — (1289.57 square feet).
Tile flooring.
- One double door to a commercial kitchen
- One serving counter from kitchen w/steel rollup door
- Round tables available upon request for an additional fee

DANCE FLOOR

- 33.5' x 48.5' — (1624.75 square feet)
Wood floor.
- Upright piano with bench

COMBINED DINING ROOM AND DANCE FLOOR

- 2914.5 square feet

SEATING ACCOMMODATIONS:

- 195 at tables and chairs
- 400 auditorium style

LOCATION: First floor.



Directions to the Nashua Senior Activity Center

From the north:

- Take Rt 3 to Nashua Exit 5E.
- Follow Rt 111 which turns into Kinsley St.
- Follow Kinsley St to Main St..
- Cross Main St. and drive to second light, which is East Hollis St.
- Cross East Hollis St., which now becomes Spring St.
- Go to the second stop sign and turn right on Temple St.
- Follow Temple St. to the Senior Center on your left.

From the south:

- Take Rt 3 to Nashua Exit 5E and proceed over the bridge onto Kinsley St.
- Follow Kinsley St. to Main St..
- Cross Main St. and drive to second light, which is East Hollis St.
- Cross East Hollis St., which now becomes Spring St.
- Go to the second stop sign and turn right on Temple St.
- Follow Temple St. to the Senior Center on your left.

From the east:

- Take Rt 111 into Hudson then towards Nashua
- Bear left off the bridge to East Hollis St.
- Proceed to Spring St. and make a right
- Drive to the second stop sign, which is Temple St. and make a right.
- Follow Temple St. to the Senior Center on your left.

From the west:

- Take Rt 111 into Nashua via Kinsley St.
- Follow Kinsley St. to Main St.
- Cross Main St. and drive to second light, which is East Hollis St.
- Cross East Hollis St., which now becomes Spring St.
- Go to the second stop sign and turn right on Temple St.
- Follow Temple St. to the Senior Ctr. on left.

Nashua Senior Activity Center

Meeting/Event Room Rental Information



**70 Temple Street
Nashua, New Hampshire 03060
Phone: 603-889-6155
Fax: 603-821-6947
www.nashuaseniorcenter.org**

**Margo Bell
Executive Director
603-816-2643
mbell@nashuaseniorcenter.org**



The Senior Center offers classrooms and function rooms that may be rented when not in use by senior programs. The space is ideal for business meetings, classes, birthday or anniversary celebrations, church services, workshops, clubs, support groups, baby showers, bridal showers, funeral receptions, and more.

The facility is handicap accessible, air-conditioned, provides ample parking, and is centrally located. Rooms may be rented for a one-time event or for multiple days or weeks.

Look inside this brochure for descriptions of our available room options:

Dining Room/Dance Floor

Activity Room

Education Room

Health Room

Music Room

Card Room

Craft Room

Commercial Kitchen

Contact Margo at (603) 816-2643 or go online at **www.nashuaseniorcenter.org** to email using our contact form. Members and non-profits receive special rates.

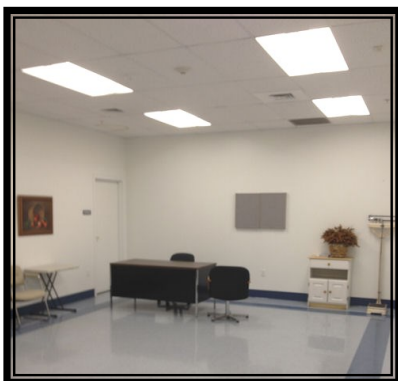




Activity Room

- 35' x 59.5' = 2082.5 square feet.
- Tile flooring.
- Counter with sink
- Island counter
- Two rolling racks of resin folding chairs
- Ten six-foot rectangular folding tables with wheels

LOCATION: First floor lobby.



Health Room

- 23.5' x 18' = 423 square feet
- Tile flooring.
- Counter with bar sink and cabinets
- Microwave with stand
- One office desk w/two office chairs
- Three small resin folding tables
- Small folding wall-mounted white board
- Three chrome frame and cloth chairs

LOCATION: Second floor.

**Members and non-profits
receive special rates.**



Craft Room

- 32' x 30' = 960 square feet.
- Tile flooring.
- Counter with sink.
- Six outside windows
- Six classroom tables with corner units
- 32 resin folding chairs
- Ten square bar tables
- Two eight-foot resin folding tables

LOCATION: Second floor.



Education Room

- 22' x 31.5' = 693 square feet. Carpet floor.
- One conference table — seats eight
- Nine student tables — seats two each
- 18 resin folding chairs
- Two exterior windows with blinds
- One rolling white board
- 32-inch wall-mounted, wide screen monitor w/DVD player on cart

LOCATION: Second floor.



Music Room

- 40' x 25.5' = 1020 square feet.
- Carpet floor.
- Pool table w/cue stick rack
- 55 blue interlocking chairs
- One upright piano with bench
- One large podium (4' W x 4' H)

LOCATION: Second floor.

Card Room

- 33' x 31' = 1023 square feet.
- Carpet floor
- 18 square bar tables
- 32 light blue steel and plastic chairs

LOCATION: Second floor.

Combined Music and Card Rooms

- 2043 square feet. Carpet floor.

**Call
Margo Bell
at 603-816-2643 for
pricing information.**



Commercial Kitchen

- Fully equipped, spacious commercial kitchen with all stainless steel appliances.
- Pass-through to dining room

LOCATION: First floor.



**All rentals/groups
must provide a
Certificate of Liability Insurance**

